

MyCARE

With me, every step of the way



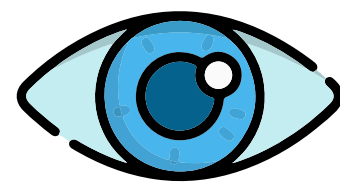
“ **REGULAR CHECK-UPS**
can help in the early
detection and prevention
of **TYPE 2**
DIABETES-RELATED
COMPLICATIONS. ”



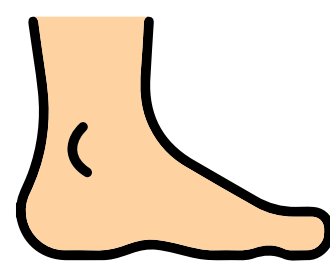
UNCONTROLLED DIABETES INCREASES YOUR RISK TO DEVELOP A RANGE OF

MICROVASCULAR COMPLICATIONS

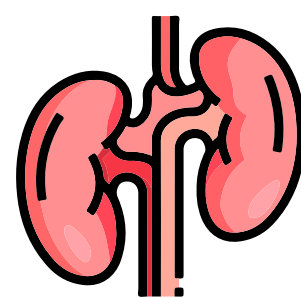
Retinopathy



Neuropathy

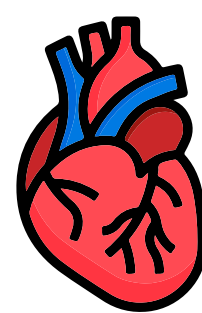


Nephropathy

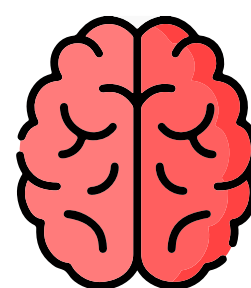



MACROVASCULAR COMPLICATIONS

Cardiovascular



Cerebrovascular



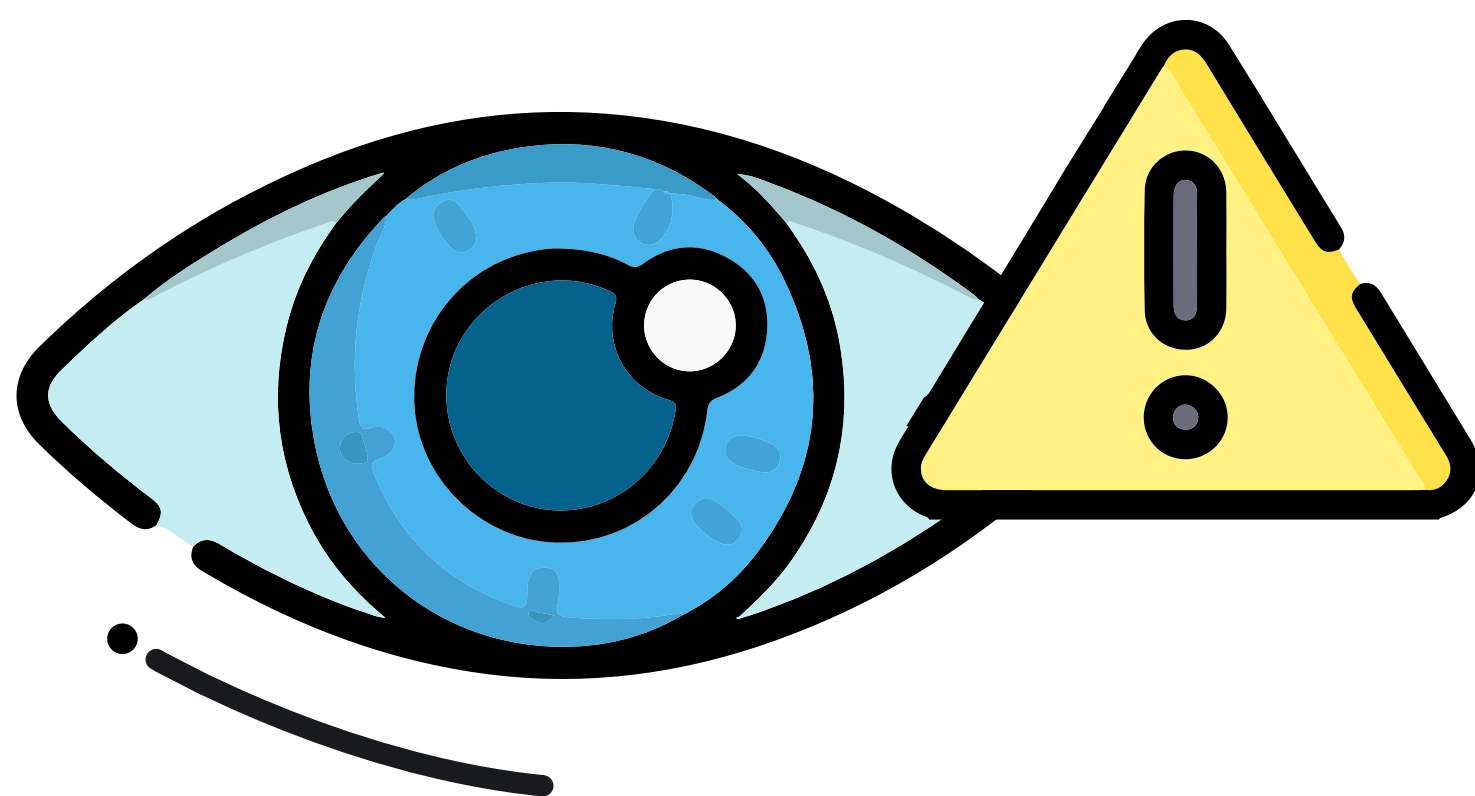


**HERE ARE A
FEW TESTS
THAT NEED TO
BE DONE
REGULARLY**

COMPLICATION: Retinopathy
(Eye Damage)

TEST: Dilated Eye Exam

FREQUENCY: At diagnosis,
then every 1 to 2 years after
that or more often if you have
signs of eye disease.



COMPLICATION: Neuropathy
(Nerve Damage)

TEST: Tendon Reflex,
Pressure/Touch Sensation,
Vibratory Sensation and
Protective Sensation, Ankle
Reflex Test

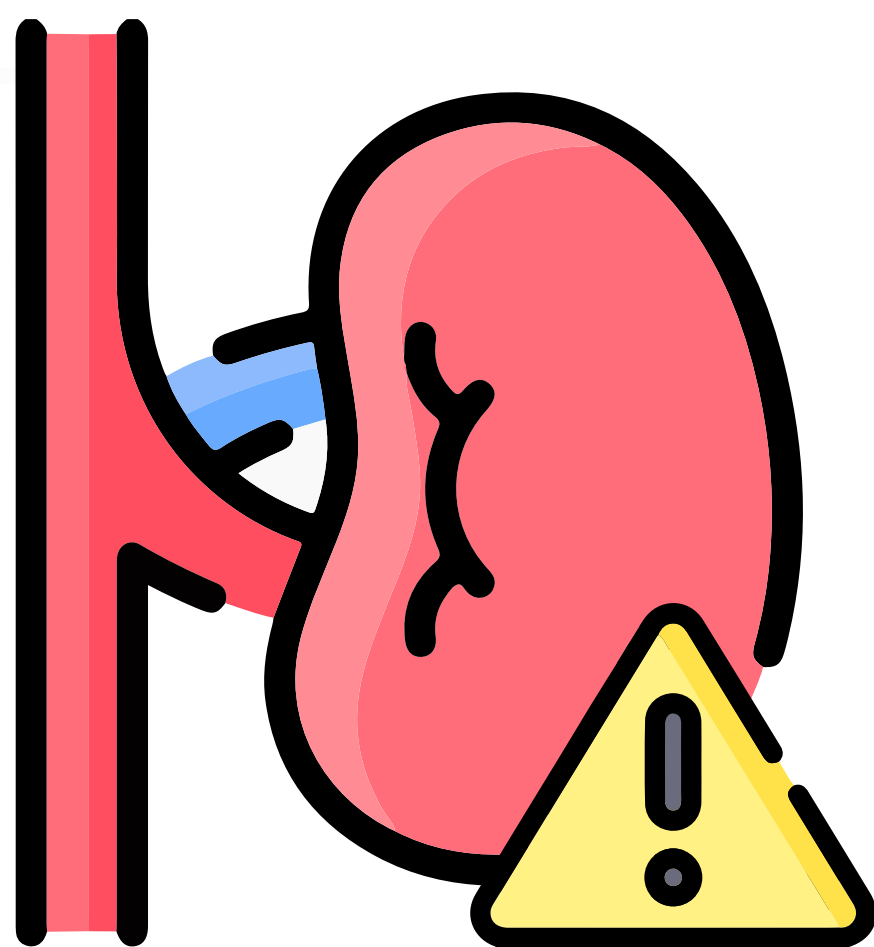
FREQUENCY: At diagnosis,
annually thereafter.



COMPLICATION: Nephropathy
(Kidney Damage)

TEST: Dipstick urinalysis for
Proteinuria, Microalbuminuria,
Serum Creatinine and
Estimated GFR,
Albumin-Creatinine Ratio (ACR)

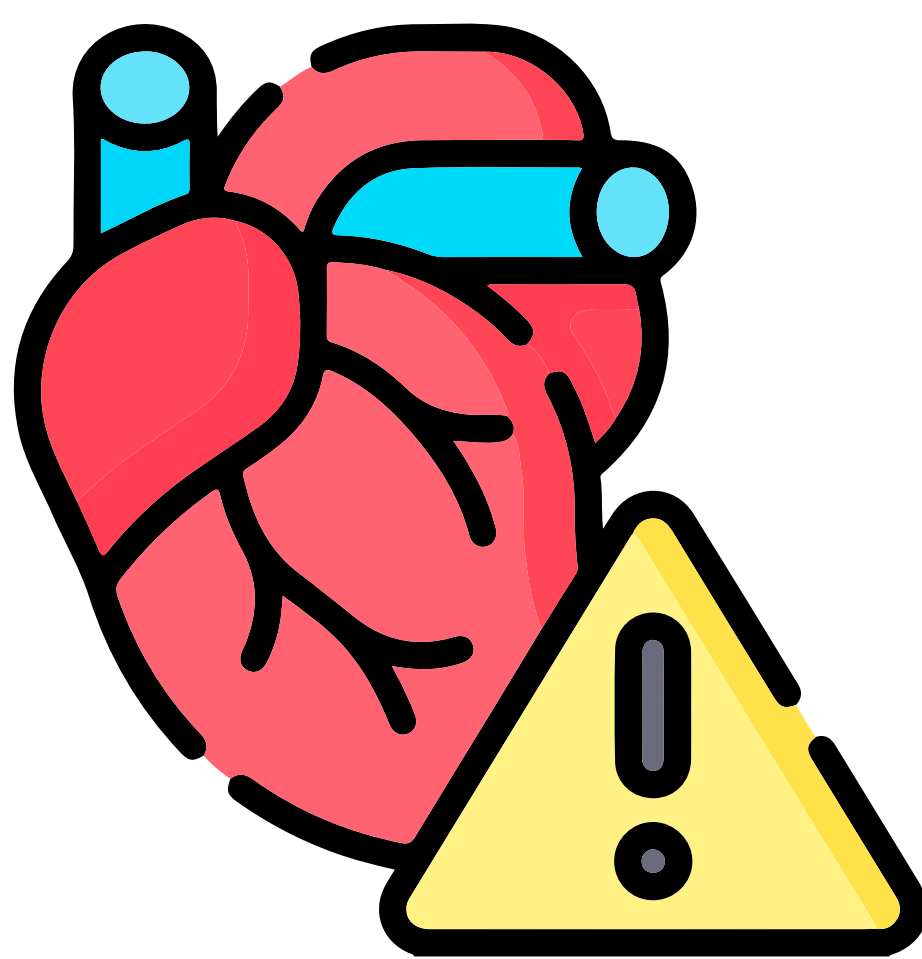
FREQUENCY: Once a year



COMPLICATION: Cardiovascular Disorders (Heart Diseases)

TEST: ECG, Blood pressure, Stress test, Lipid profile, Chest X-ray, 2D Echocardiography

FREQUENCY: Lipids should be checked at diagnosis and annually thereafter



REMEMBER

These are only guidelines.

Please get your health
check-up done as advised by
your doctor



“ For more information,
contact your doctor or your
MyCARE Diabetes Educator.”



MyCARE

With me, every step of the way

Reference

- ADA. Health Checks for people with Diabetes. Available at <https://diabetes.org/diabetes/newly-diagnosed/health-checks-people-with-diabetes>
- Yang, Z., Zhang, Y., Chen, R., Huang, Y., Ji, L., Sun, F., Hong, T., & Zhan, S. (2018). Simple tests to screen for diabetic peripheral neuropathy. The Cochrane Database of Systematic Reviews, 2018(7), CD010975. <https://doi.org/10.1002/14651858.CD010975.pub2>
- IDF module 2011. Section 5. Module 5.2 and 5.3. Available at: <http://www.idf.org/education/resources/modules-2011/download>. Last accessed: 14th September 2015
- Roett MS, Liegl S and Jabbarpour Y. Diabetic Nephropathy- The Family Physician's Role. Am Fam Physician. 2012;85(9):883-889
- American Heart Association. Heart-Health Screenings. 2014. Available at: [http://www.heart.org/HEARTORG/Condition/Heart-Health-Screenings _ UCM_428687_ Article.jsp](http://www.heart.org/HEARTORG/Condition/Heart-Health-Screenings_UCM_428687_Article.jsp)
- ISPAD CLINICAL PRACTICE CONSENSUS GUIDELINES 2022: Microvascular and macrovascular complications in children and adolescents with diabetes.

Issued in Public Interest by



The guide/presentation/content/literature is for general information, guidance and educational purposes only and is not complete or exhaustive. The guide /presentation/content/literature is not intended or implied to replace or substitute any current practice and or advice/guidance/diet provided by healthcare professionals. This guide/presentation/content/literature does not constitute any treatment/therapy/medication/diet/opinions for any patients who are on diabetes medication, the patients are required to prior consult their healthcare professional before acting on any change on treatment/therapy/ medication/diet and/or opinions. USV Private Limited makes no representations as to accuracy, completeness, correctness, suitability or validity of any information contained in this guide/presentation/content/ literature and will not be liable for any losses, injuries or damages arising from its use.

